

# “VARÐAN Á HOLTINU”











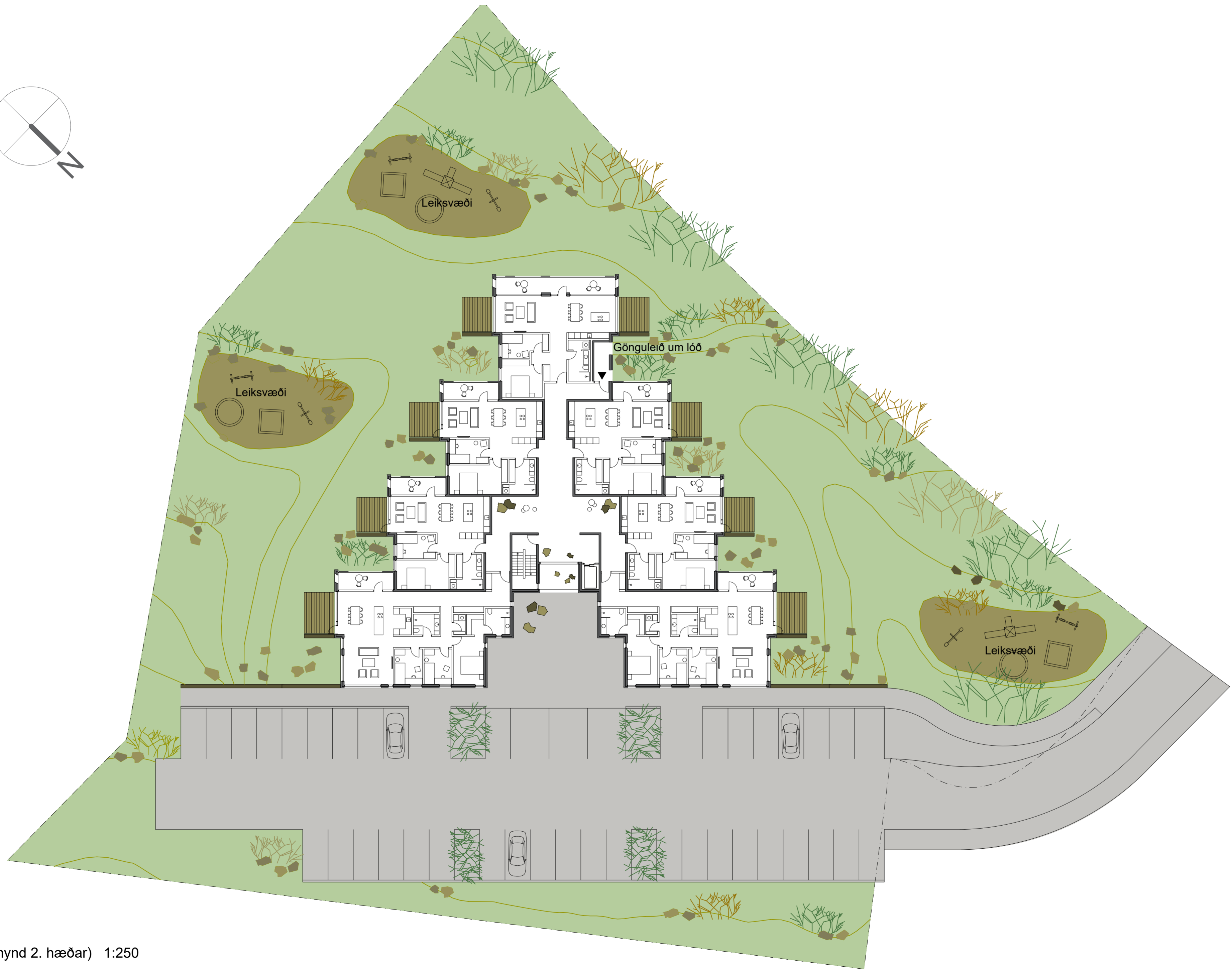
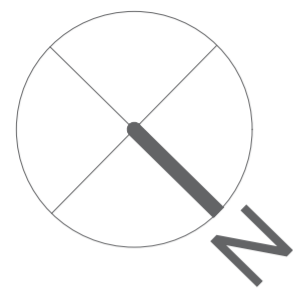




AFSTÖÐUMYND 1:500

## VÖRÐUVEGUR 2

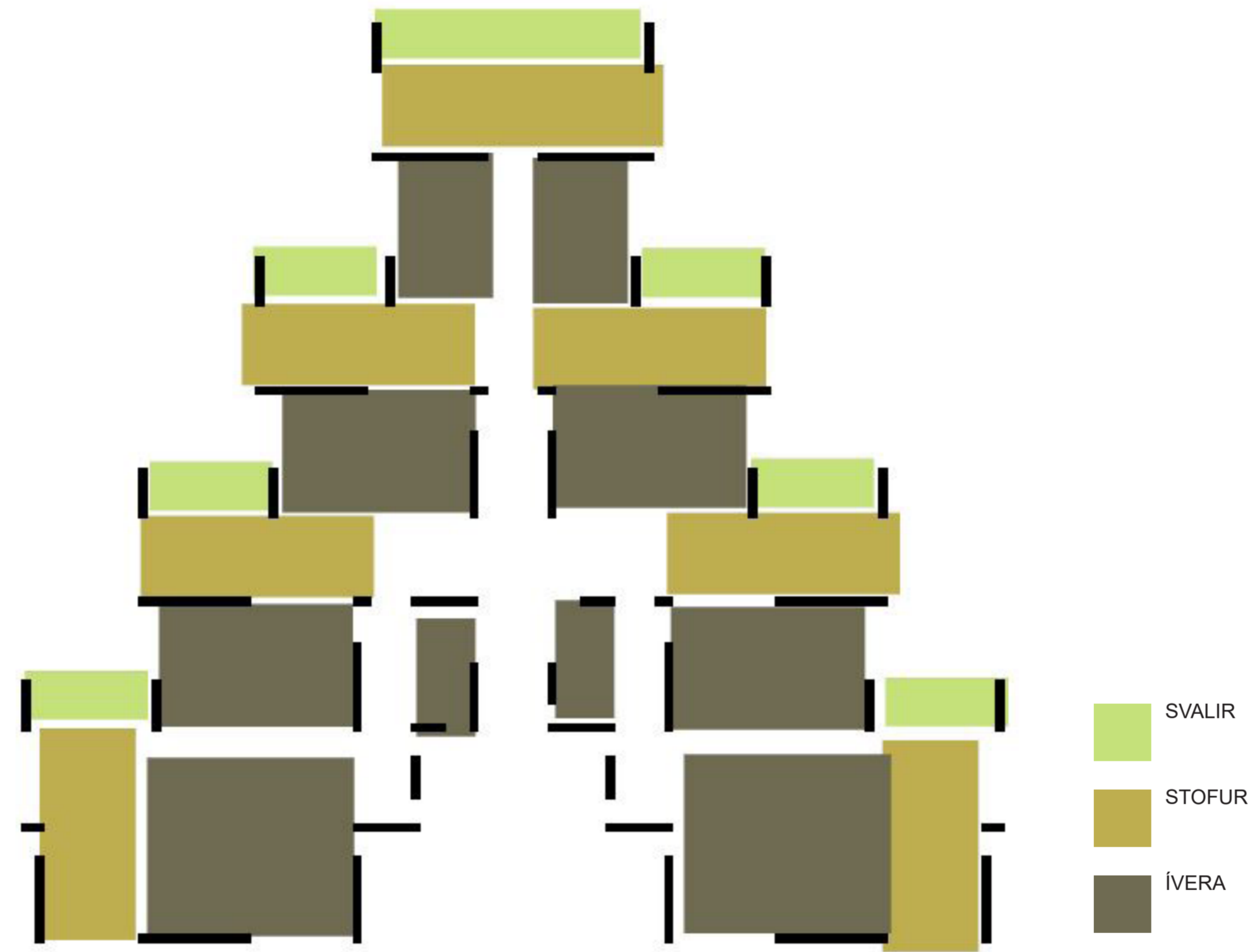




Lóð (grunnmynd 2. hæðar) 1:250

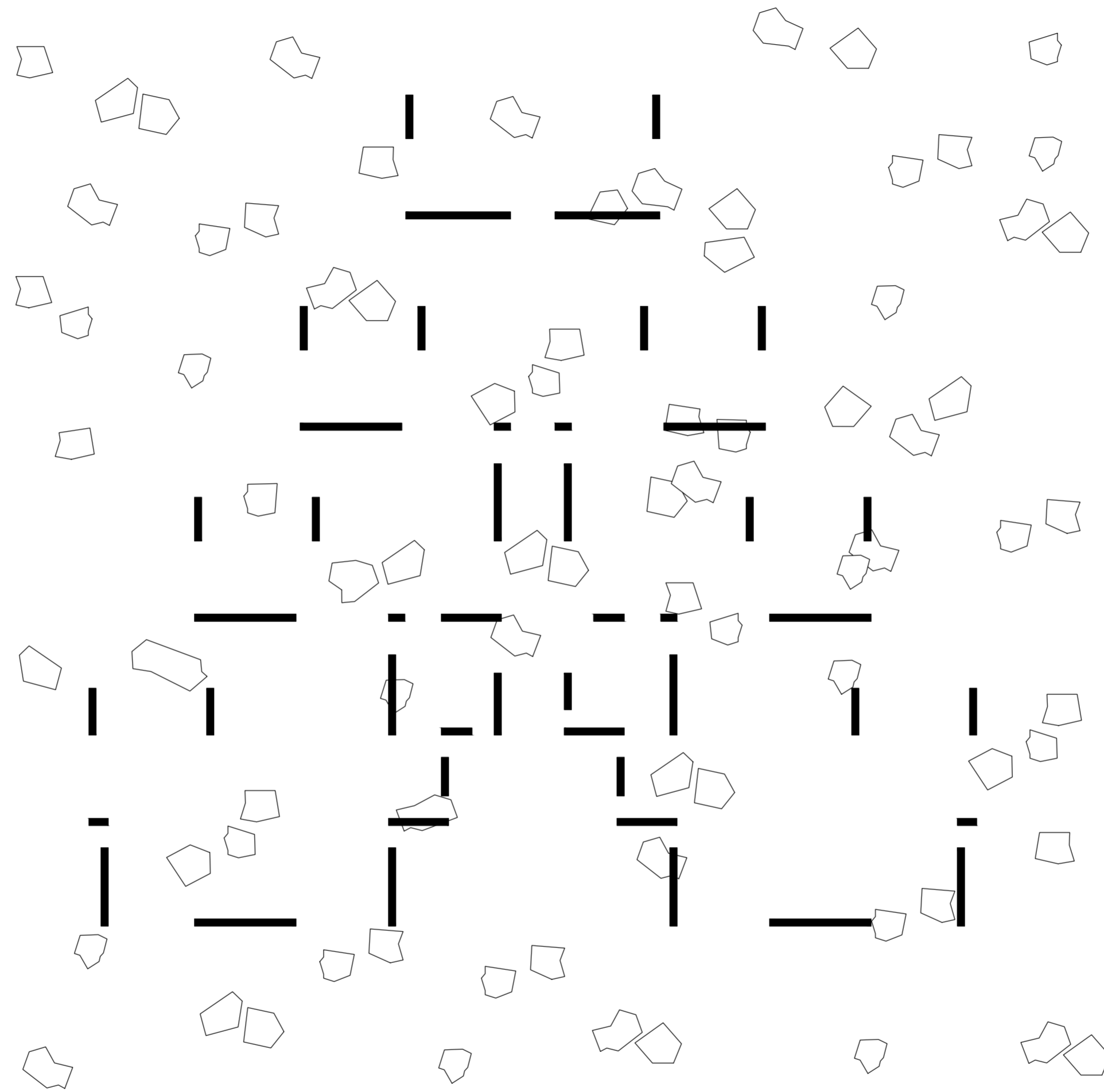
VÖRÐUVEGUR 2





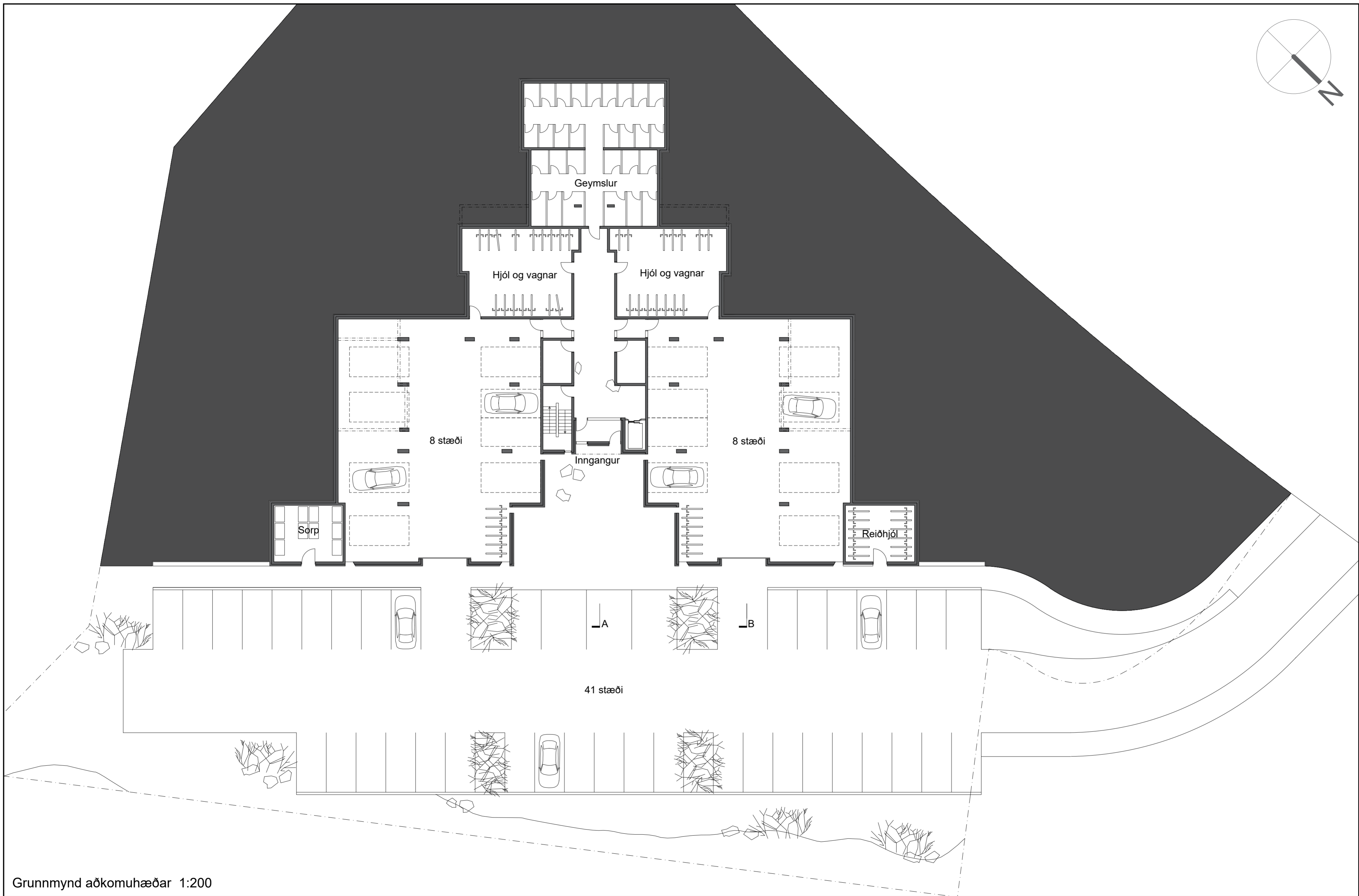
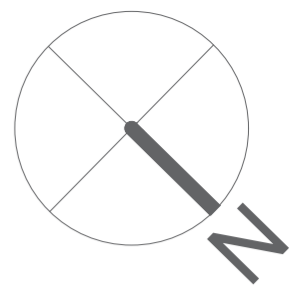
ÚTFÆRLSA ÍBÚÐAEININGA





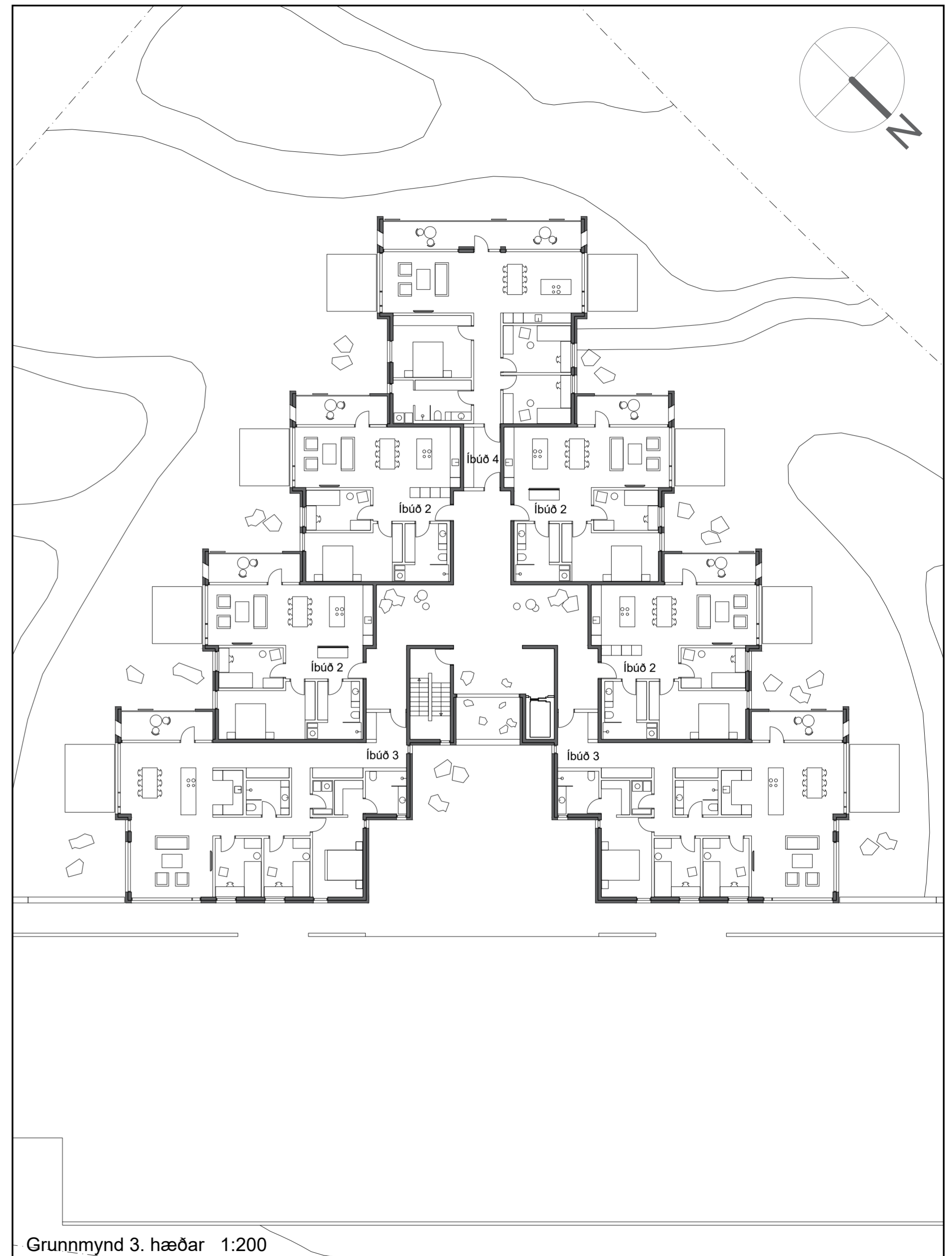
HOLTÍÐ FLÆÐIR SAMAN VIÐ BYGGINGU



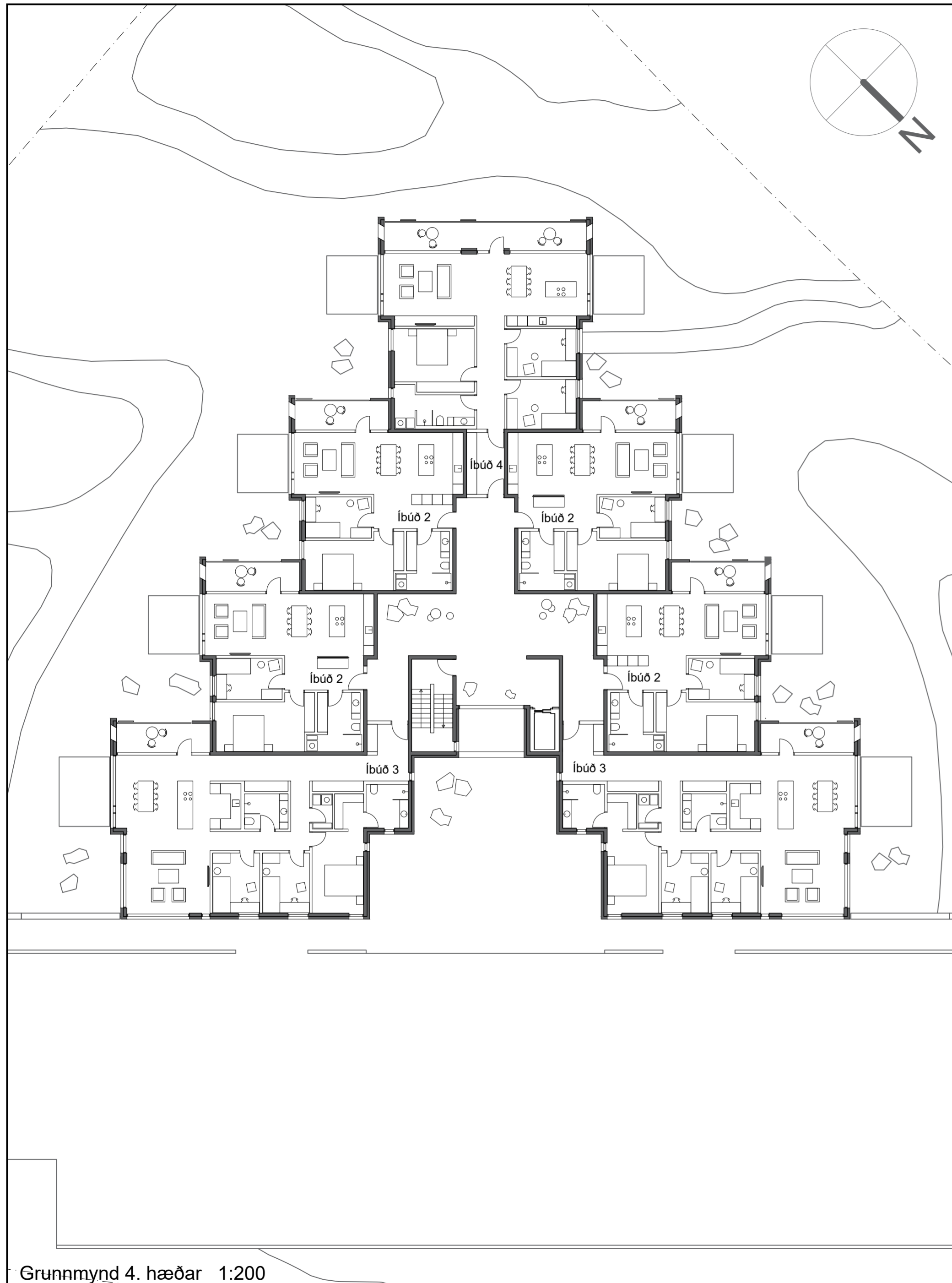


Grunnmynd aðkomuhæðar 1:200

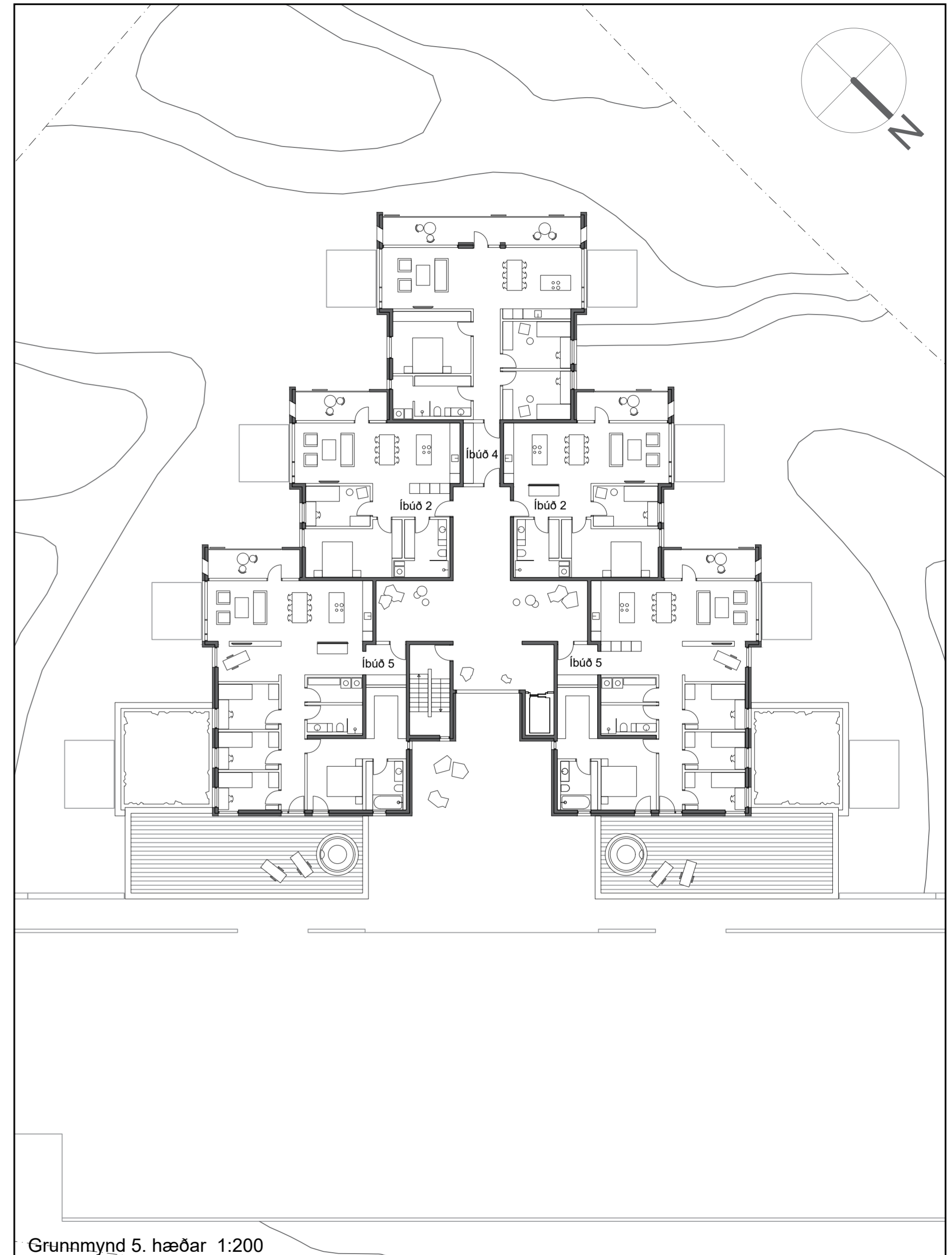






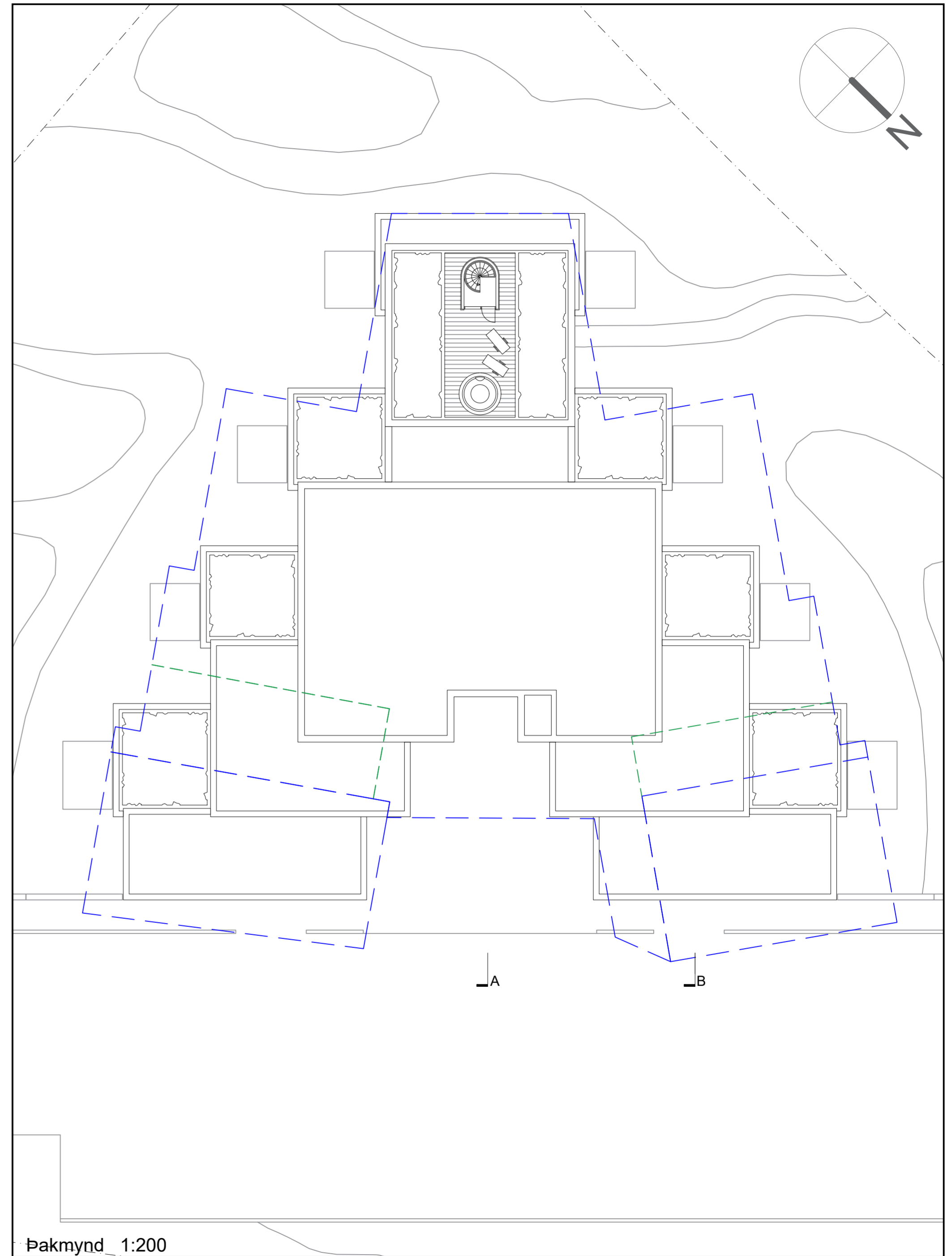
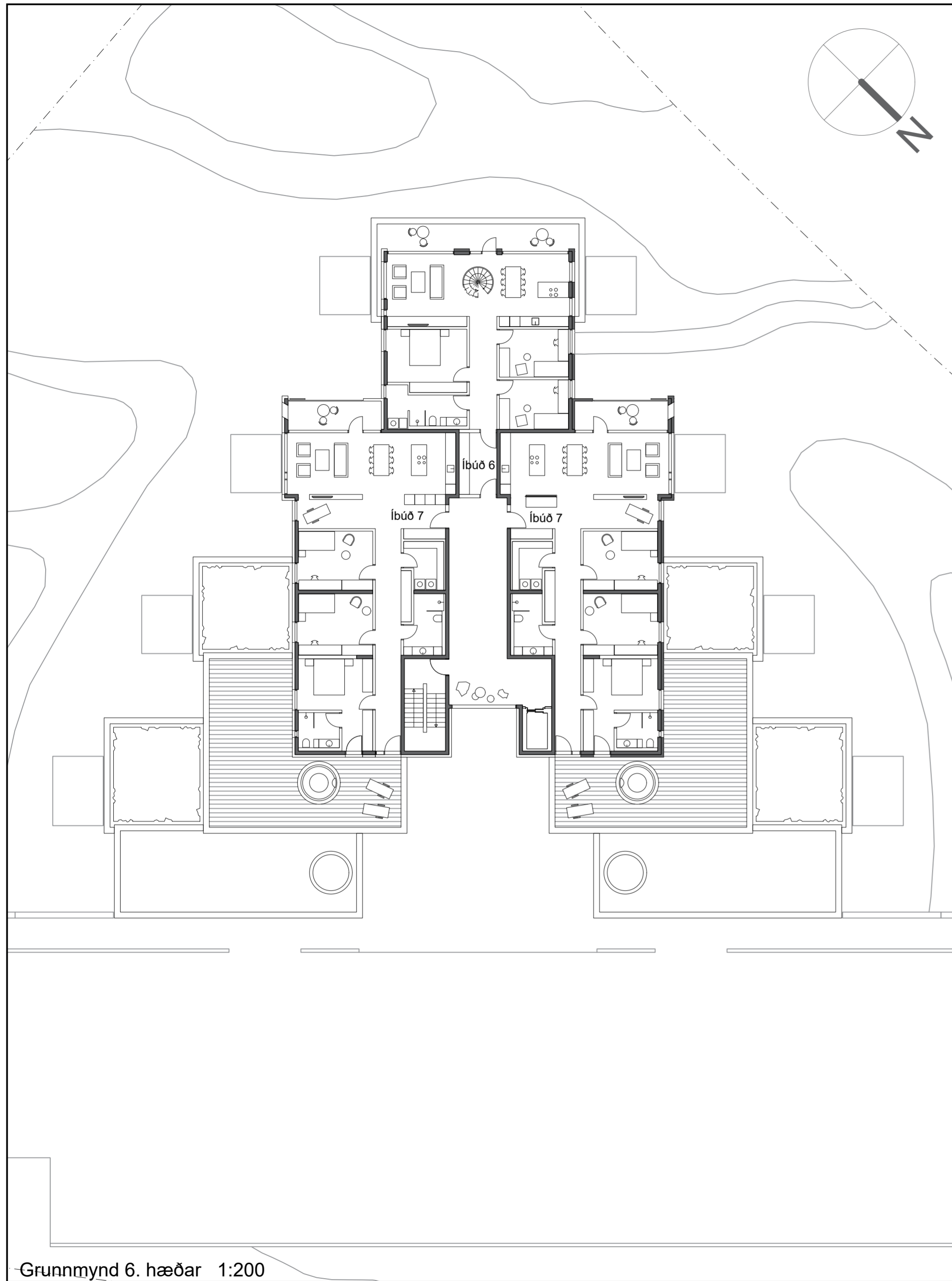


Grunnmynd 4. hæðar 1:200

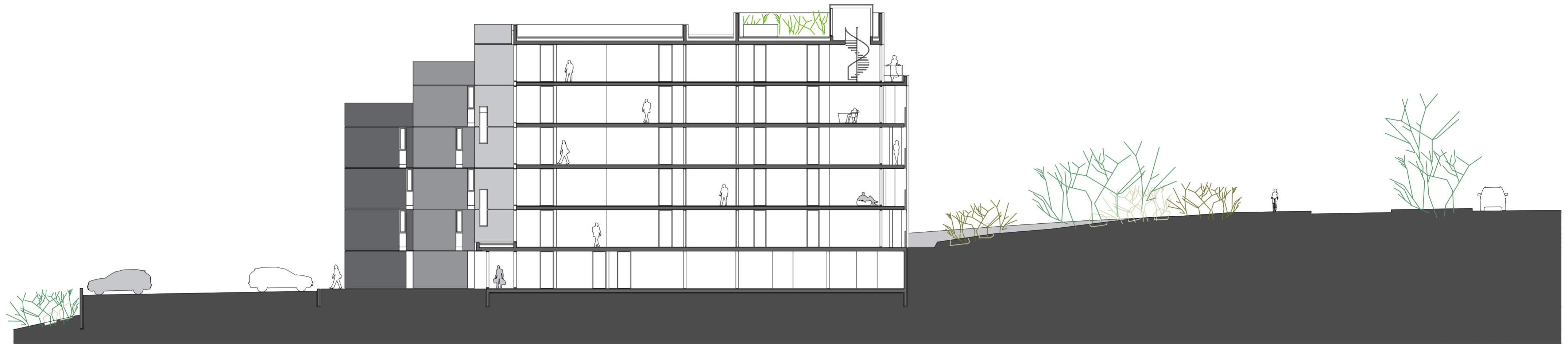


Grunnmynd 5. hæðar 1:200









Snið A 1:200



Snið B 1:200





Suðvesturhlíð 1:200



Norðausturhlíð 1:200

VÖRÐUVEGUR 2



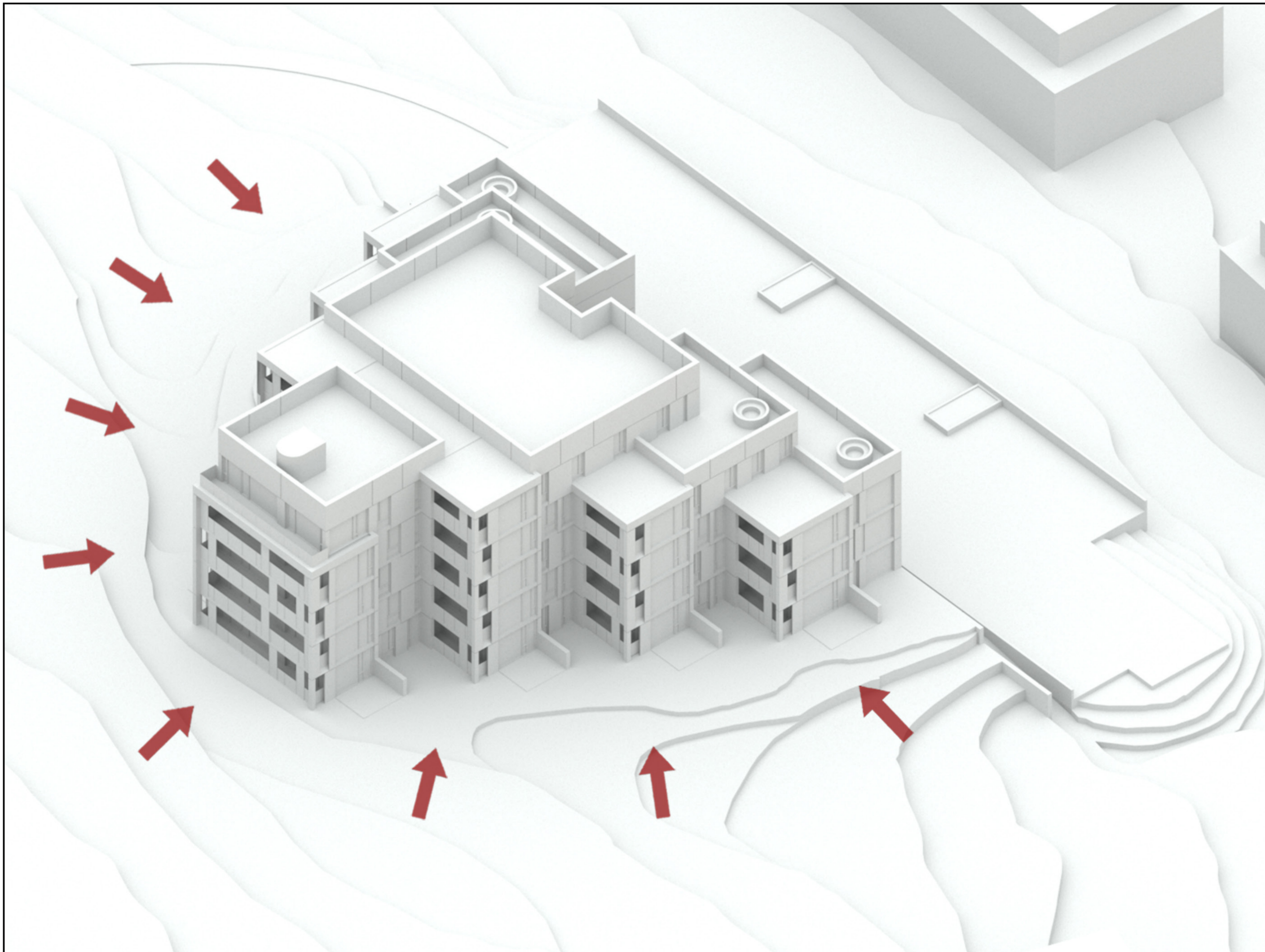


Norðvesturhlíð 1:200



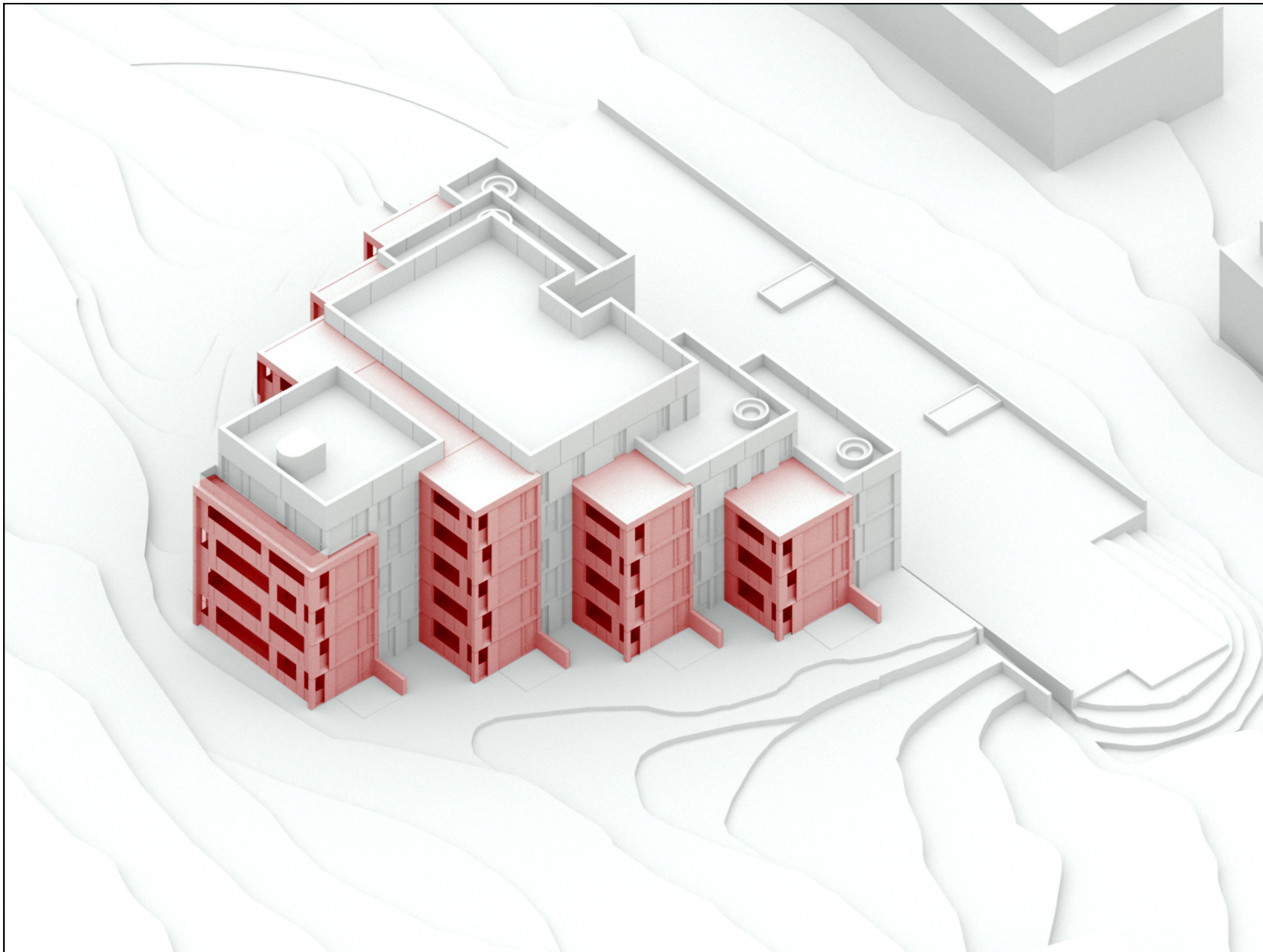
Suðausturhlíð 1:200





ÚTFÆRSLA ÍBÚÐA HÁMARKAR  
NÝTINGU SÓLAR





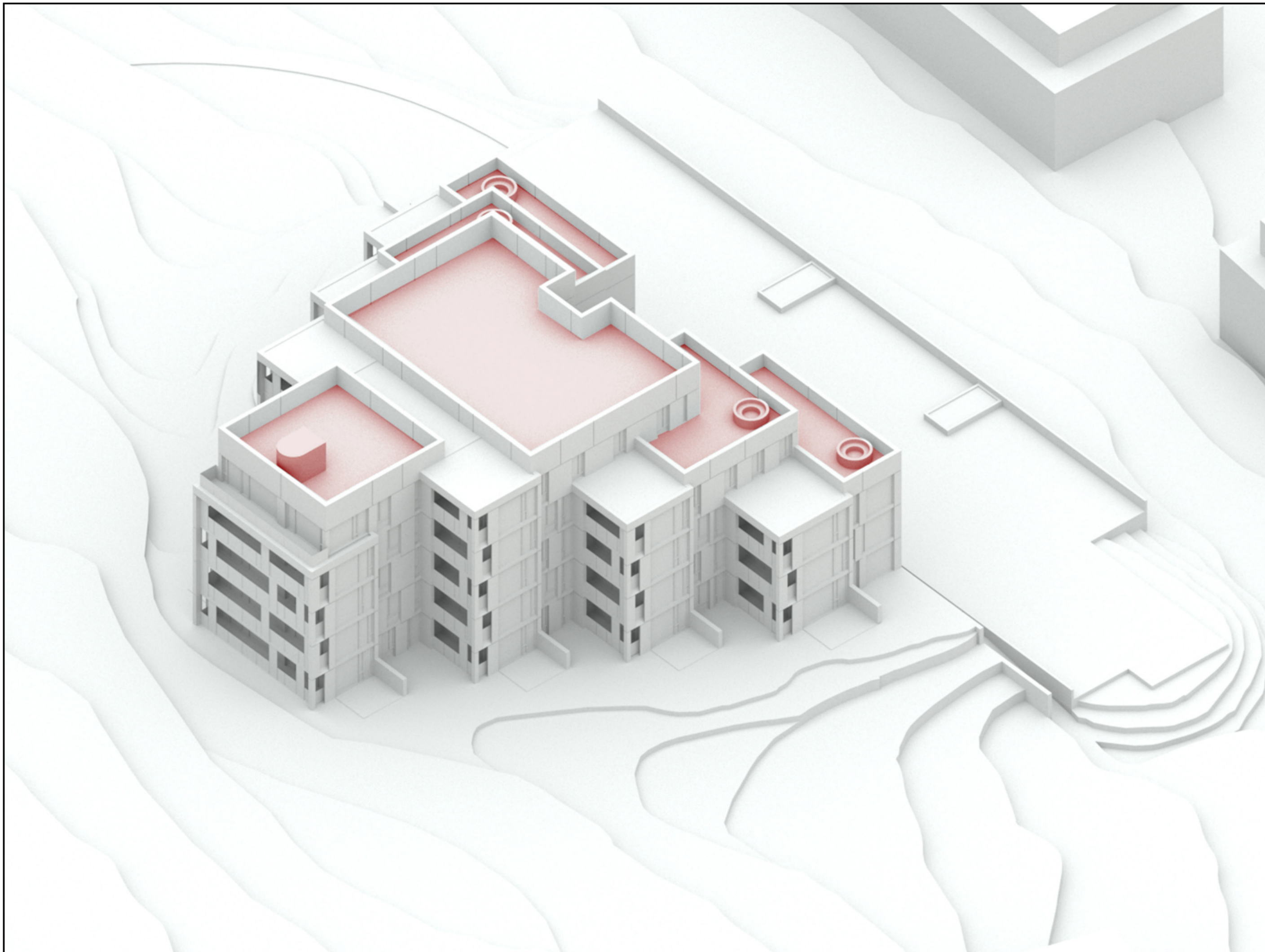
SVALIR OG STOFUHLUTAR ÍBÚÐA KLÆDDIR  
JARÐLITADRI STEINKLÆÐNINGU





MEGIN HÚSHLUTAR KLÆDDIR GRÁTÓNA  
STEINKLÆÐNINGU TIL BLÆBRIGÐAMUNA





ÞAKGARÐAR  
MÖGULEIKI Á SAMEIGINLEGUM GARÐI YFIR SAMEIGN



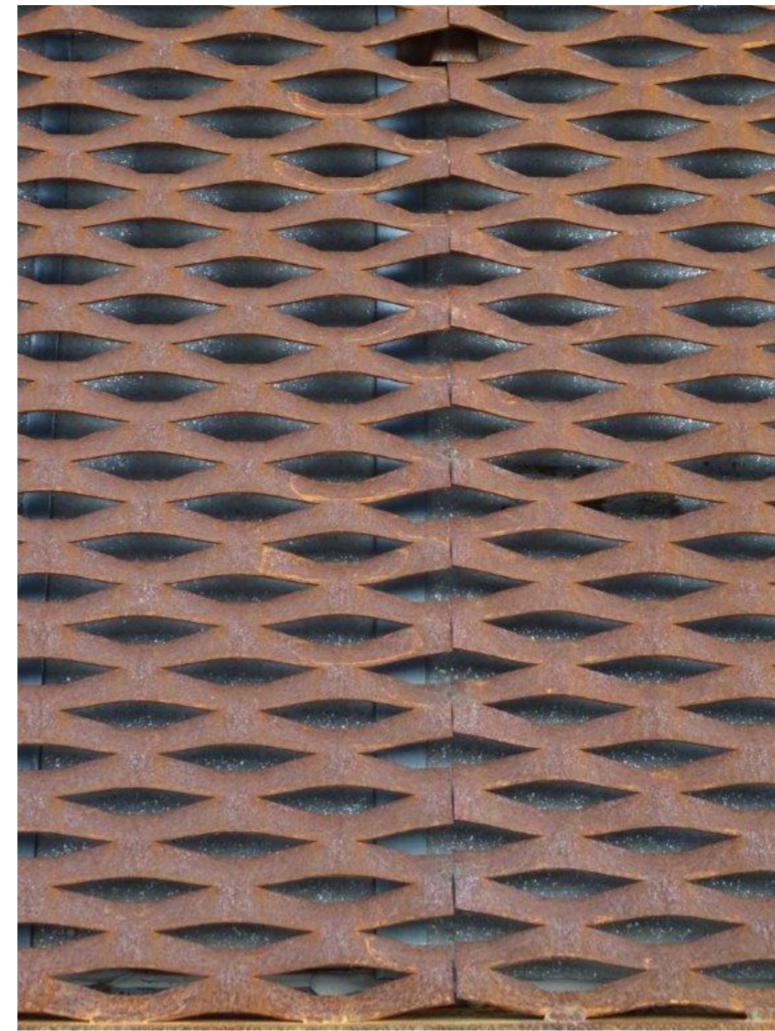


"CORTEN-STÁL" MÖSKVANET SEM UPPBROT Á SVÖLUM.  
EINNIG ÆTLAÐ SEM UPPISTAÐA FYRIR KLIFURJURTIR

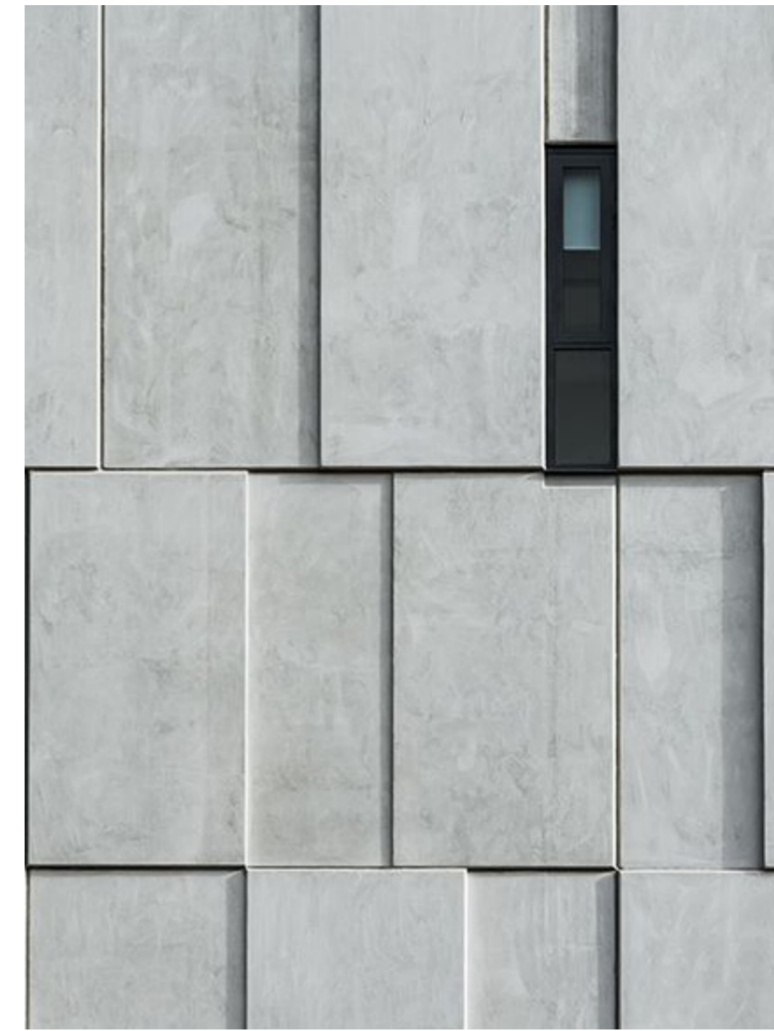




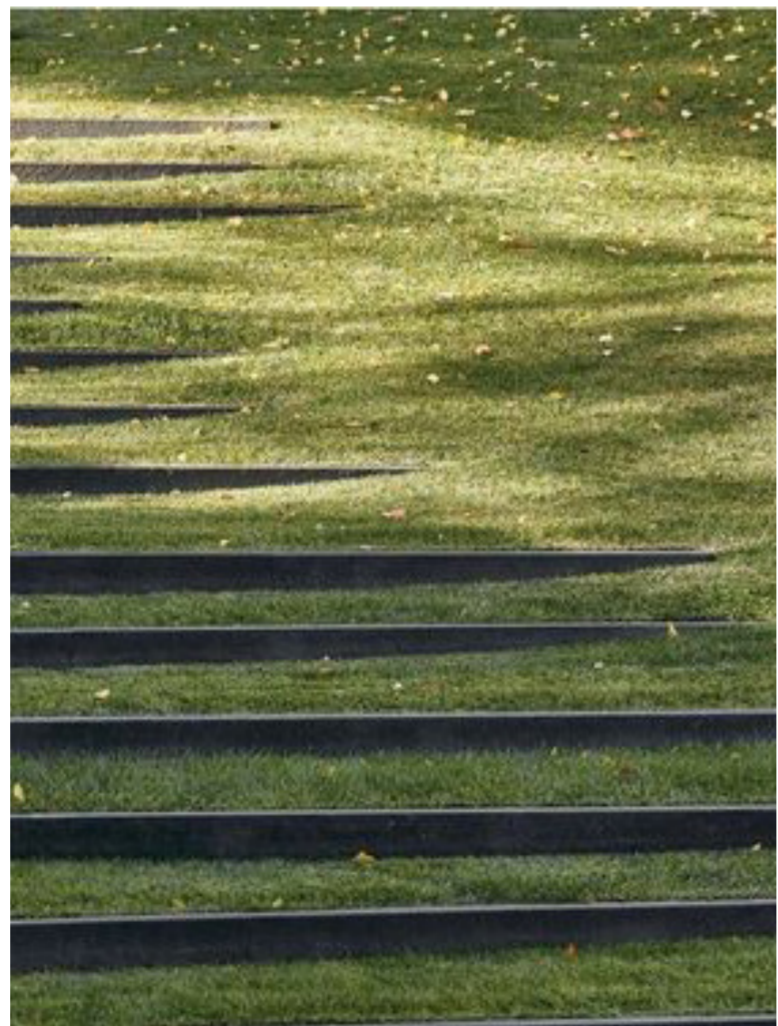
GRÆN SVÆÐI & ÞÖK



CORTEN-STÁL



STEINKLÆÐNINGAR



LANDMÓTUN



SAMEIGN



JARÐLITIR





VARÐAN Á HOLTINU MEÐ HOLTGERÐRI LÓÐINNI OG URRIDAHOLTSSTRÆTI Í BAKGRUNN





HORFT TIL AUSTURS AÐ VÍFILSSTAÐAHLÍÐ OG HEIÐMÖRK

VÖRÐUVEGUR 2

ÚTI INNI  
A R K I T E K T A R





HORFT AÐ AÐKOMU OG AÐALINNGANGI





SUBURHLIÐ Á SÓLRIKUM SUMARDEGI





SUBURSVALIR SEM HÁMARKA NÝTINGU SÓLAR

VÖRÐUVEGUR 2

ÚTI INNI  
A R K I T E K T A R