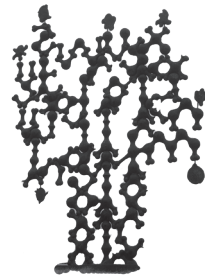
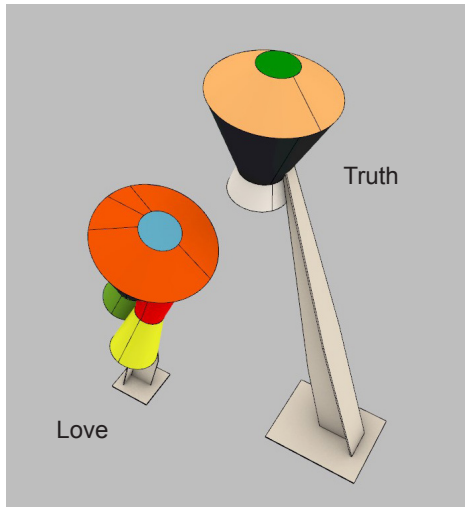




Carl Boutard



Friendship



This proposal for Háholt consists of two painted steel sculptures, six and nine meters high. They are arranged in a constellation with the *Tree of Signs* on the west end of Vinatorg. The three sculptures each symbolise one part of the Oddfellows motto *Friendship, Love, Truth*.

In my initial analysis of the site I worked with the idea of an all seeing eye in a somewhat playful way. I established major vantage points - or viewing cones as it is also called - from where people see the square. I understood that some locations were visible from all directions and some were completely out of sight. From this came the idea of the sculptural objects that I propose, built of intersecting cones, a physical representation of different views coming together. Apart from its reference to the multiple views of the all seeing eye I also found this idea of views coming together to be quite sympathetic in itself.

Tree of Signs stands for *friendship*, not only because of the collaboration between M/M and Gabriela Friðriksdóttir but also due to the fact that after several moves throughout the years it will now be joined by the two sculptures *Love*, which is symbolised by several cones that have merged into each other, and *Truth*, the tallest of them all connecting earth and sky. The new sculptures are elevated on solid steel supports and form a portal one can move under and around.

Where *Tree of Signs* marked the genesis of establishment at Urriðaholt, some twenty years later it will now participate in its culmination, joining the new sculptures commissioned for this occasion and thereby telling the story of Urriðaholt, a story of coming together. Relocated on to the green island on the western slope of the square as is suggested in the renderings of Tripoli + Krads, it can rest in a natural environment.

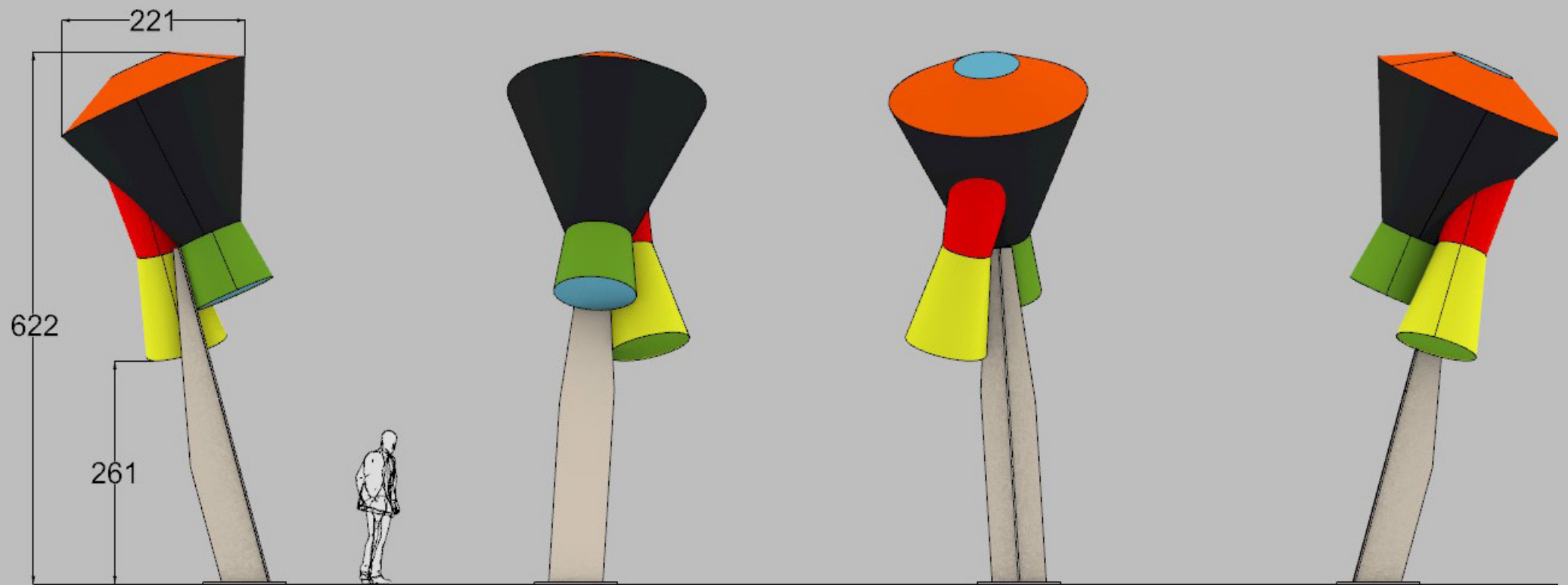
View from east



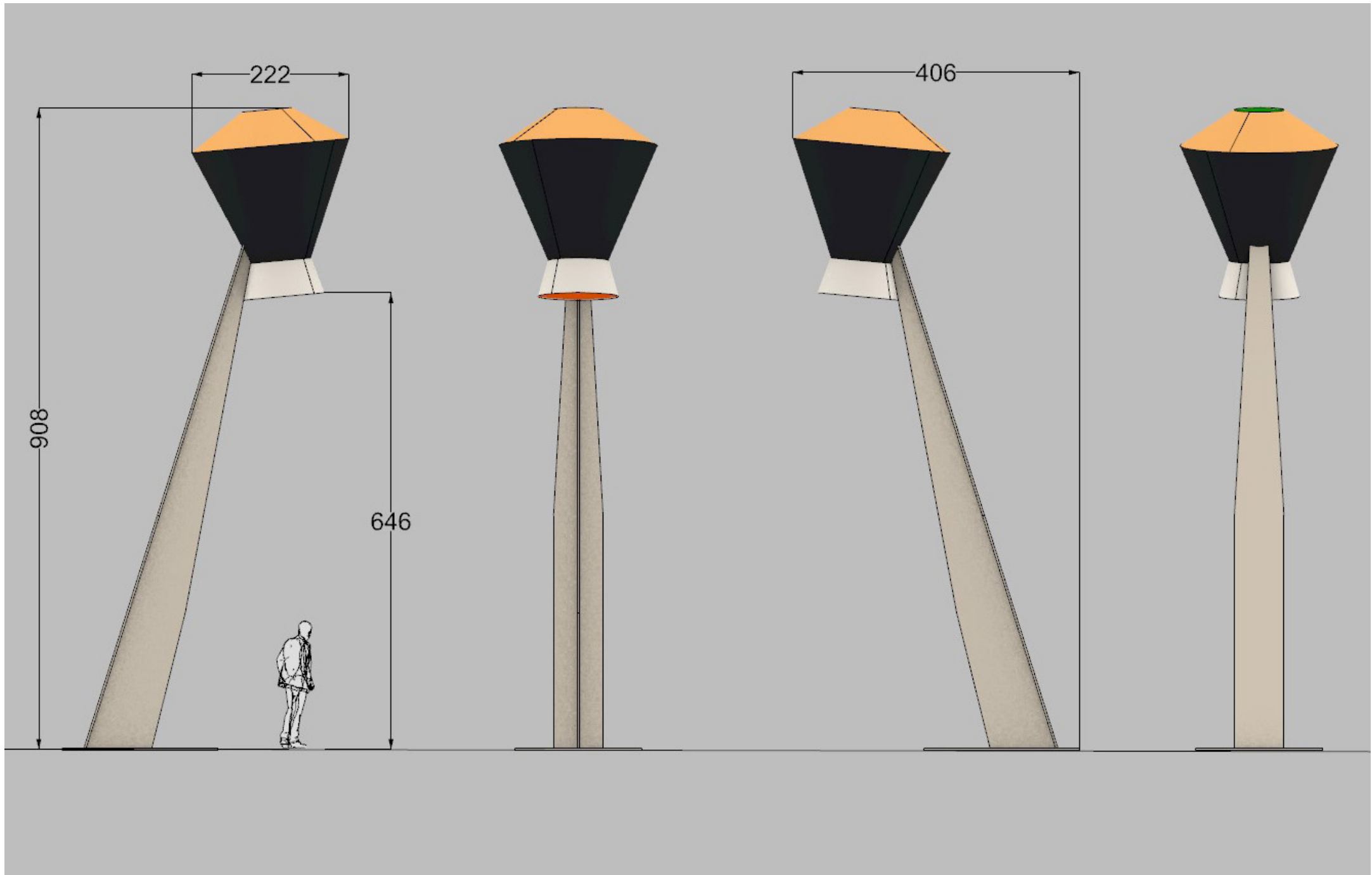
View from west



Elevations Love



Elevations Truth



References



Fig. 1 Carl Boutard. *Keeper*, 2025. Stainless steel, polyurethane paint. 750 x 400 x 380 cm. Location: Hallunda, Sweden.

This sculpture was produced by Stockholm Vattenskärning earlier this year and painted by Allblästring. For Håholt I suggest that they are engaged for production there as well.

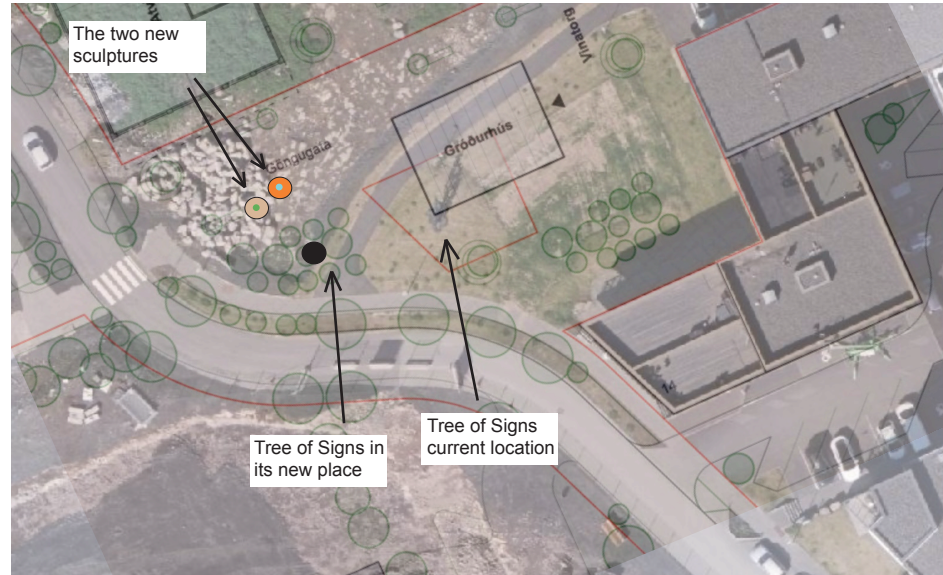


Fig. 2 Layering of the site as it is today with the new plan by Tripoli and Krads. In the image one sees that the proposed greenhouse will interfere with the location of Tree of Signs where it stands today. In my proposal I suggest that the Tree of Signs is moved to the green patch about 15 meters westwards.

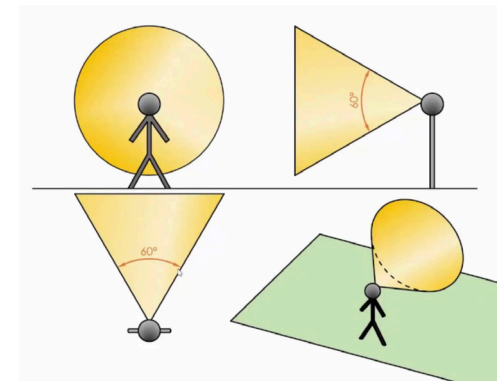
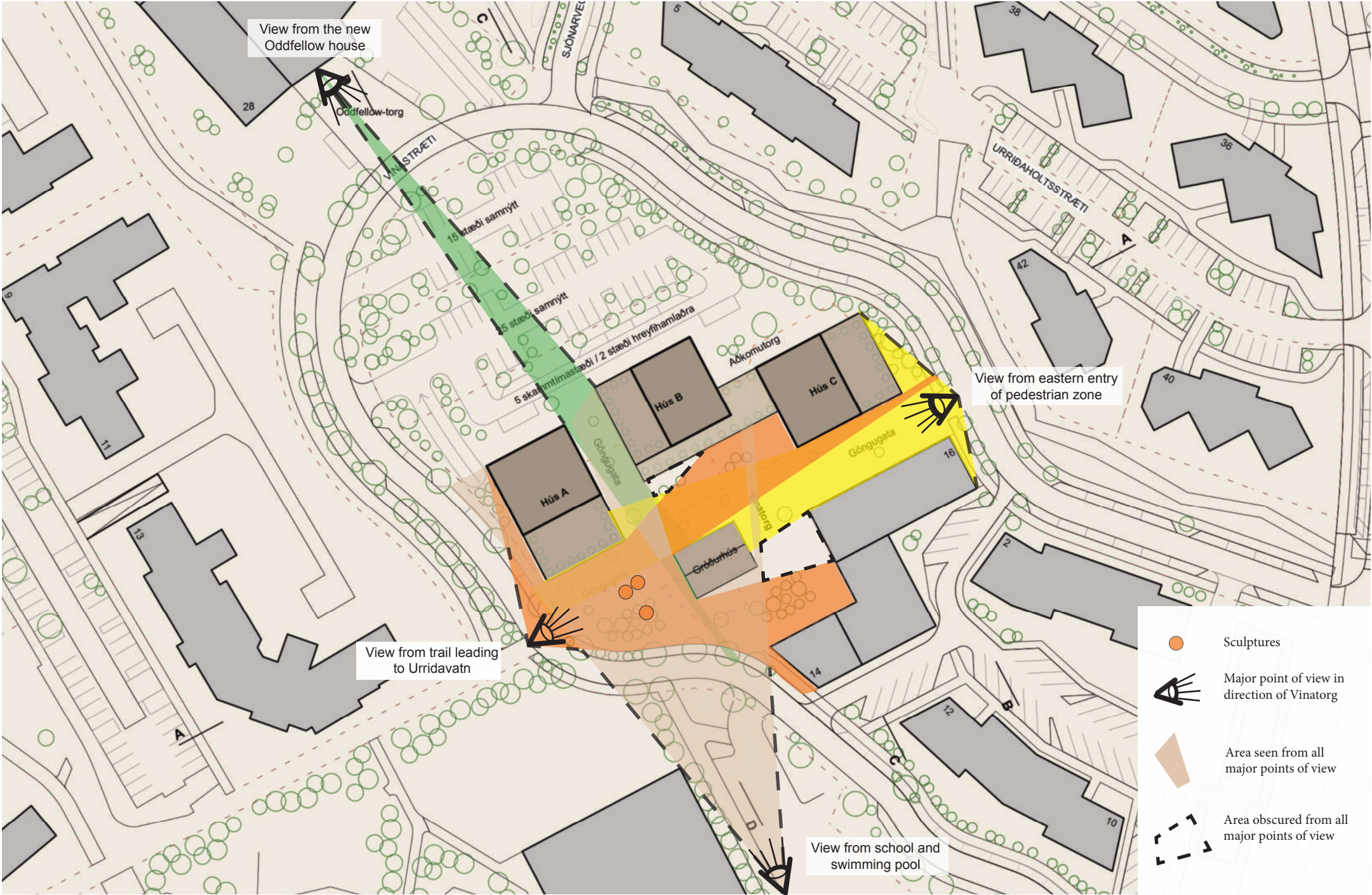


Fig. 3 Illustration of the viewing cone which was I found inter

Analysis of view cones



Cost estimate

Carl Boutard
2025 10 01

Production and installation	Item	Amount	á price	ISK	Note
Manufacturing at Stockholm Vattenskärning	Truth	1		7.500.000	Steel manufacturing incl. material, waterjet cutting, rolling, bending, welding, grinding
	Love	1		5.500.000	Ibid
Painting at Allblästring in Södertälje	Truth	1		1.000.000	Sandblasting, primer and coating using two component Tikkurila Polyurethane wet paint
	Love	1		1.500.000	Ibid
		10	4.000	40.000	Color tests painted on sheet metal
Engineer static calculation and dimensioning		2	400.000	800.000	Joakim Larsson WSP
Stockholm Vattenskärning		2	10.000	200.000	Shop drawings
Stockholm Vattenskärning		2	50.000	100.000	Templates for drilling, waterjet cutting in 2 mm sheet metal
Stockholm Vattenskärning		2	50.000	100.000	Welding of transport supports
Transport from Kungsängen to Freeport in Sweden		2	200.000	400.000	Transport Kungsängen - Stockholm Freeport
Bluewater shipping Stockholm - Reykjavik		2	500.000	1.000.000	Transport of two 40' general purpose high cube containers 12 meters length
Customs and import tolls in Iceland				4.000.000	Icelandic VAT 24% based on manufacturing costs
Concrete foundation		2	500.000	1.000.000	Including drawing, digging, reinforcement case, frost-shooting material, concrete etc.
Land surveyor		1		150.000	Create drawings and exact marking on site for placement of sculptures
Installation in Háholt - crane		2	150.000	300.000	Mobile faucet/ crane, 2 days
Installation in Háholt - bolting		1		100.000	Preparation, drilling and mounting of sculptures in their concrete foundation
Hilti Hit RE 500 V4, 22mm drillbit, anchor rods		1		300.000	2K anchor putty and 32 pcs m20 Hilti anchor rods in stainless steel
Rent of skylift for retouching paint after installation		1		50.000	Scratches from transport and mounting retouched
Travels Reykjavik - Stockholm		2	60.000	120.000	Once during production and once before delivery
Sign with title and artists name on site		1		50.000	Stainless steel sign mounted in proximity to the sculptures
Insurance with Gefvert AB / S&P Consultants		1		300.000	App. 1% of production budget

Production costs in total	24.510.000
Artists fee, 30% of total project cost	14.000.000
Unforeseen costs 10% of production	2.450.000
Additional 25% VAT on production in Sweden	4.500.000

PROJECT TOTAL	45.460.000
---------------	------------

Notes on cost estimate:
What one specifies as art related costs may vary but here I have included all related costs that I can think of, except for lighting. Please recalculate and deduct if you do not recognize some of these as included in the art budget. Also note that unforeseen costs as well as VAT and import costs to Iceland + VAT on production in Sweden is included in the estimate but VAT excluded with regards to installtion cost in Iceland. I assume that it is beneficial to locate production of sculptures to Sweden and that all costs and fees therefor can go through my Swedish limited company, Carl Boutard AB, which is VAT registered in Sweden. Finally, cost estimates are tricky since the ambition to produce the best work possible is generally prioritised by artists. Therefor other agreements with regards to cost liability are of interest to me and open for discussion .